

@

h

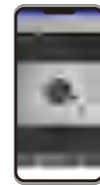
### Portable Probe Series

7TU 7TU 7TU

The invisible dirt particles on the end surface of the optic fiber connectors may interrupt the optic signal by interference, or damage the connector/ light source components by reflected waves. Therefore, daily inspection and cleaning of the end face before fiber connection is essential to reduce cost of operation and maintenance, improve troubleshooting efficiency and ensure transmission quality.

#### Features

- A. Clear and comprehensive test  
Test various connectors including UPC/APC, SC, FC, LC, E2000, MU, ST, MPO and etc. Ferrules & Bulkheads
- B. Fast and convenient  
Access to all kinds of environments for both ferrules and bulkheads
- C. Powerful applications  
DWDM, SDH, SONET equipments or transmission racks, optic switchers, distribution boxes
- D. 2 Magnification  
200\* or 400\* magnification for the best evaluation for end faces of optic fibers
- E. Test results stored in machine or input PC via USB port



CE RoHS

## Inspection Probe

Portable probe series-FVM103



AV probe & 4.3" monitor



The series is portable inspection probe of high definition for optic fiber end faces. It adopts the international IEC61300-3-35 detection standard, with manual adjustment accuracy of 0.01mm, which can clearly detect fine scratches and small stains.



**High Definitions**



**High Speed Test**



**SD Card Data Save**



**200/400 Magnification**

### Features

- **Clear and comprehensive detection**  
For SC, FC, LC, E2000, MU, ST and MPO UPC/APC interfaces
- **Fast and convenient test**  
Test both the ferrule and bulkhead
- **Various applications**  
Used DWDM, SDH, SONET and all kinds of optic commision devices
- **Dual magnifications**  
200X or 400X magnification for better analysis for the end faces
- **Test Result storable**  
Save the test result at any time, upload to PC via USB port



Portable monitor

### Flexible Configurations



Probe + 3.5" monitor



Probe + 4.3" memory monitor



Probe + laptop with analysis software

## Parameter

Probe	
Magnification	200X or 400X
Resolution	0.75um
Mode	AV or USB
Weight	180g
Accuracy	0.01mm
Power supply	Through monitor
Output port	4pin port or USB
Working temperature	-10 ~ +50°C
Storage temperature	-20 ~ +60°C

Monitor	
Volume	170 x 100 x 45 mm / 0.5kg
Power supply	Built-in 1650mA Li battery or DC
Data save path	SD card
Working temperature	-10°C-+50°C
Storage temperature	-20°C-+60°C

## Ordering Information

Ordering List		
NO.	Model	Description
1	AV or USB probe	Inspection probe
2	3.5" common monitor (optional)	Monitor
3	4.3" memory monitor (optional)	Memory monitor
4	25-U-M	Test: FC/SC/ST/E2000 UPC ferrule
5	125-U-M	Test: LC/MU UPC ferrule
6	LC-U-F	Test: LC UPC bulkhead
7	FC-U-F	Test: FC UPC bulkhead
8	SC-U-F	Test: SC UPC bulkhead
9	FC/SC-A-F optional	Test: FC/SC APC bulkhead
10	LC-A-F optional	Test: LC/APC bulkhead
11	25-A-M optional	Test: SC/FC/ST/E2000 APC ferrule
12	125-A-M optional	Test: LC/MU APC ferrule
13	ST/E2000-U-F optional	Test: ST/E2000 UPC bulkhead
14	SC-U-F-60 optional	Test: SC/UPC 60 degree end face
15	SC-A-F-60 optional	Test: SC/APC 60 degree end face
16	MPO-F optional	Test: MPO bulkhead
17	MPO-M optional	Test: MPO ferrule
18	Customized adapter available upon request	



# Inspection Probe Portable probe series-FVM105A

☑ This portable WiFi end face probe could acquire clear images of high-resolution in real time on the smart device mobile phone or tablets through WiFi. The images are captured and stored for analyzing. Automatic test results are easy to be saved and transmitted for effective traceability. It greatly improves and expands the applicability of the product, making the end detection process more flexible and convenient.

### Features

- Unidirectional Focus
- 200 Magnifications, clear images of high resolutions
- Work with different adapters to fulfill various applications
- Images / test reports can be stored in devices or derived
- Auto analyze conforms with IEC standard

### Specifications

Parameter	Description
Magnification Lens	200X
Resolutions	0.75um
Camera	1280X1024
Resolutions Focus	Manual
Mode Focus Range	4mm
Interface	TYPE-C
Transport Protocol	WIFI/USB2.0
WiFi Distance	100 meters
Battery Capacity	1500mAh
Recharge Time	3h
Endurance Time	3h
Volume	159X52X38mm (adapter not involved)
Weight	200g
Work Temperature	-20°C~+50°C

### The software saves Pass/Fail test reports automatically

- Support Wins/Android/iOS systems
- Support USB / WIFI transmission
- Polymer Lithium battery safe and durable
- Portable and easy operation
- Support multi service optic fiber end face test

- 1 'One Press' Auto analyze**  
Automatically output and record Pass/Fail report.
- 2 WIFI Status & Battery Indicator**  
Polymer battery offers safe and long service.
- 3 Switch between WIFI & USB modes** Support different applications.
- 4 Various adapters**  
Useful standard adapters  
Support multi service optic fiber end face test



### Ordering Information

Standard Adapters :



Main body : FVM105A

Adapter	Usage
25/U/M (Standard)	SC/FC/ST/E2000 UPC ferrules
125/U/M (Standard)	LC/MU UPC ferrules
FC/U/F (Standard)	FC UPC bulkheads
SC/U/F (Standard)	SC UPC bulkheads
LC/U/F (Standard)	LC/PC UPC bulkheads

Other adapters upon request